



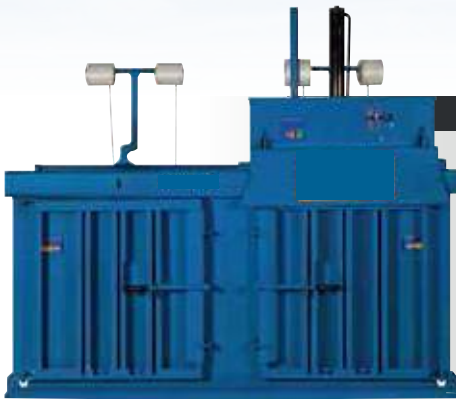
TECHNICAL SPECIFICATION

Balers



75 Baling Press

TECHNICAL	SPECIFICATION
Press Force	3.5 tonnes
Loading Aperture (WxD)	640 x 700mm
Bale Weights	Up to 75kg
Bale Dimension (HxWxD)	1000 x 700 x 500mm
Cycle Time	24 seconds
Noise Certificate	72 decibels
Machine Weight	270kg
Power Supply (kW-V-Hz)	1.5kW-220-240V-13amp
Overall Dimensions (HxWxD)	2350 x 1000 x 585mm



75 Twin Chamber Baling Press

TECHNICAL	SPECIFICATION
Press Force	3.5 tonnes
Loading Aperture (WxD)	700 x 500mm
Bale Weights	Up to 75kg
Bale Dimension (HxWxD)	1000 x 700 x 500mm
Cycle Time	35 seconds
Noise Certificate	72 decibels
Machine Weight	562kg
Power Supply (kW-V-Hz)	1.5kW-220-240V-13amp
Overall Dimensions (HxWxD)	1978 x 2050 x 820mm
Additional Chamber (WxD)	1000 x 820mm
Travel Height Upon Request	1978mm



75 Twin Chamber Baling Press

TECHNICAL	SPECIFICATION
Press Force	50 Tonnes
Loading Aperture (WxD)	800 x 1500mm
Bale Weights	Up to 550kg
Bale Dimension (HxWxD)	1200 x 1500 x 800mm
Cycle Time	40/90 seconds
Noise Certificate	74 decibels
Machine Weight	1650kg
Power Supply (kW-V-Hz)	11kW-400-50Hz/ 2.2kW -220-240V
Available in Phase	32 amp 3-Phase or 16amp single
Overall Dimensions (HxWxD)	3300 x 2100 x 1100mm
Travel Height Upon Request	2500mm

www.sdwaste.co.uk

SD Waste Paper Tetlow Bridge Waterloo Street Manchester M8 5XB Tel: 0161 740 7466